

Industries in IWAKI City

-For sustainable industrial development-



We support Iwaki area companies which promote innovations to the world.

ICSN Outline of ICSN

ICSN, an industry-academia-government network association, was established in May, 2006, aiming to create new industries and businesses in Iwaki and to further reactivate the area.

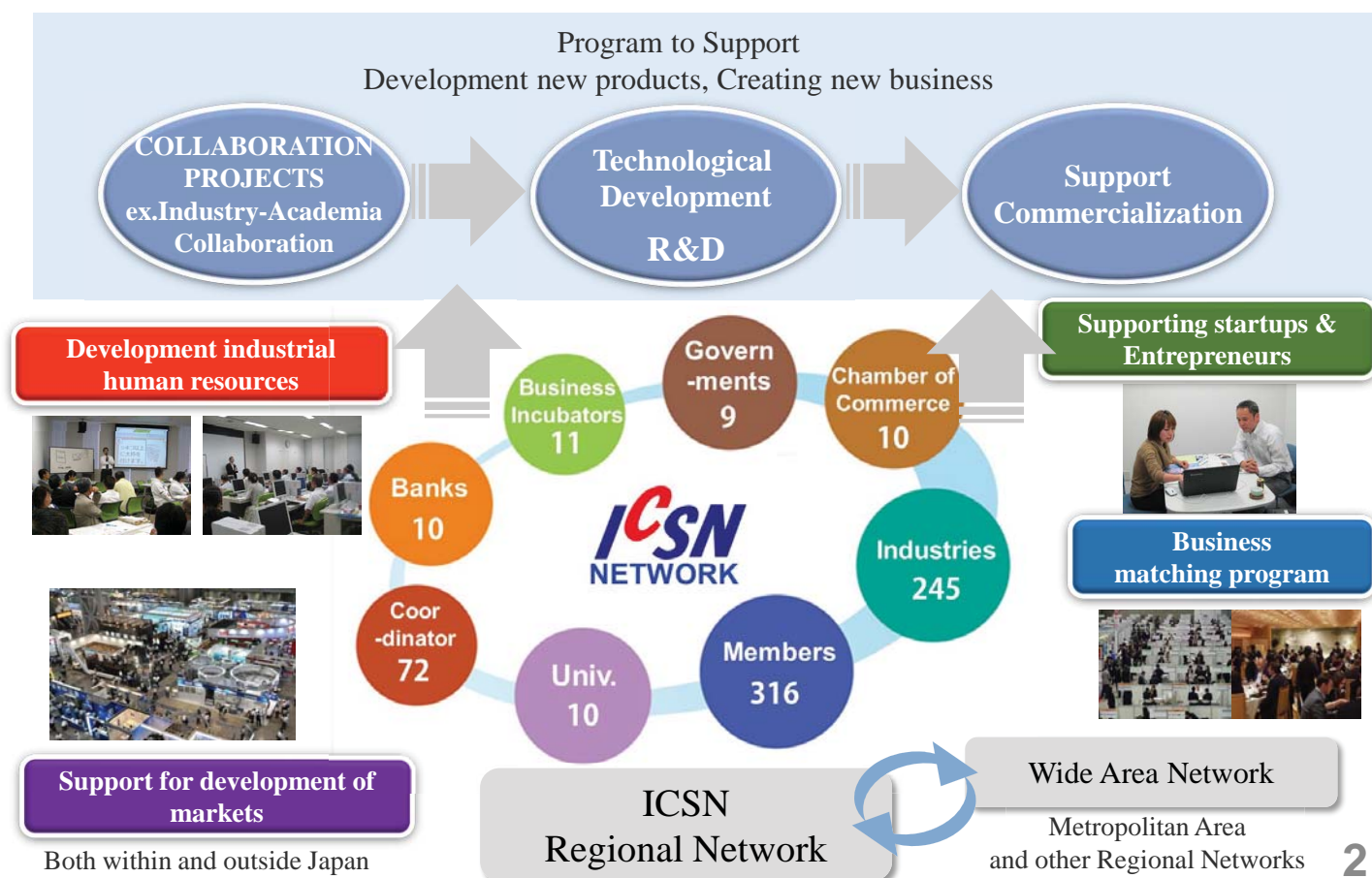
Taking full advantage of the network between the industry, academia and government in the local area, we deal with various needs in an integrated and comprehensive manner, including training for entrepreneurs, management innovation and technical development support for small and medium-sized businesses.

Outline of ICSN

Established in	May 2006
Location	c/o Iwaki Business Innovation Center 120 Tamachi, Taira, Iwaki-city, Fukushima-Pref , 970-8026, Japan
Representative	Chairman: SEIMEI IGARI - Corporate Adviser of the Iwaki Commerce and Industry Liaison Council - Adviser of the Iwaki Association of Corporate Executives
Main member companies	Alpine Alps Electronics, KUREHA Inc., Furukawa Battery Inc.




ICSN Scope of Support Activity



ICSN Result of business activity

Indication	Number of Results
Creating new Collaboration Projects 連携プロジェクト創出	About 500 new projects
Support to R&D, Technological Development Projects 研究開発・技術開発支援	264 projects
Acquisition of Patent 特許取得	106
Creating New Businesses, New Products 新規事業創出	Over 100 businesses , products
Birth to Entrepreneurs 起業家創出	52 entrepreneurs
Development of markets with Business Matching ビジネスマッチングによる販路開拓	Over 650 ※商談成約数

Outline of Iwaki City

- Name**
 **Iwaki City**
- Area**
 1232.02 Km²
 Twice as big as Tokyo metropolitan area
 One of the biggest city in Tohoku region
- Season**
 With long daylight hours and less snow, it enjoy a relatively temperate climate all year round. Off the coast of Fukushima, there is a rich "sea line" where the Kuroshio of the warm current and the Oyashio of the cold current meet.
- Population**
 347,392 (2017.12.1)
- Traffic**
 (Expressway)
 Tokyo ⇄ Iwaki 2 Hours
 (Express train)
 Ueno (In Tokyo) ⇄ Iwaki 2 Hours



50th Anniversary 2016

The distance from Iwaki-City is business kilometrage of the railroads.



Port of Onahama



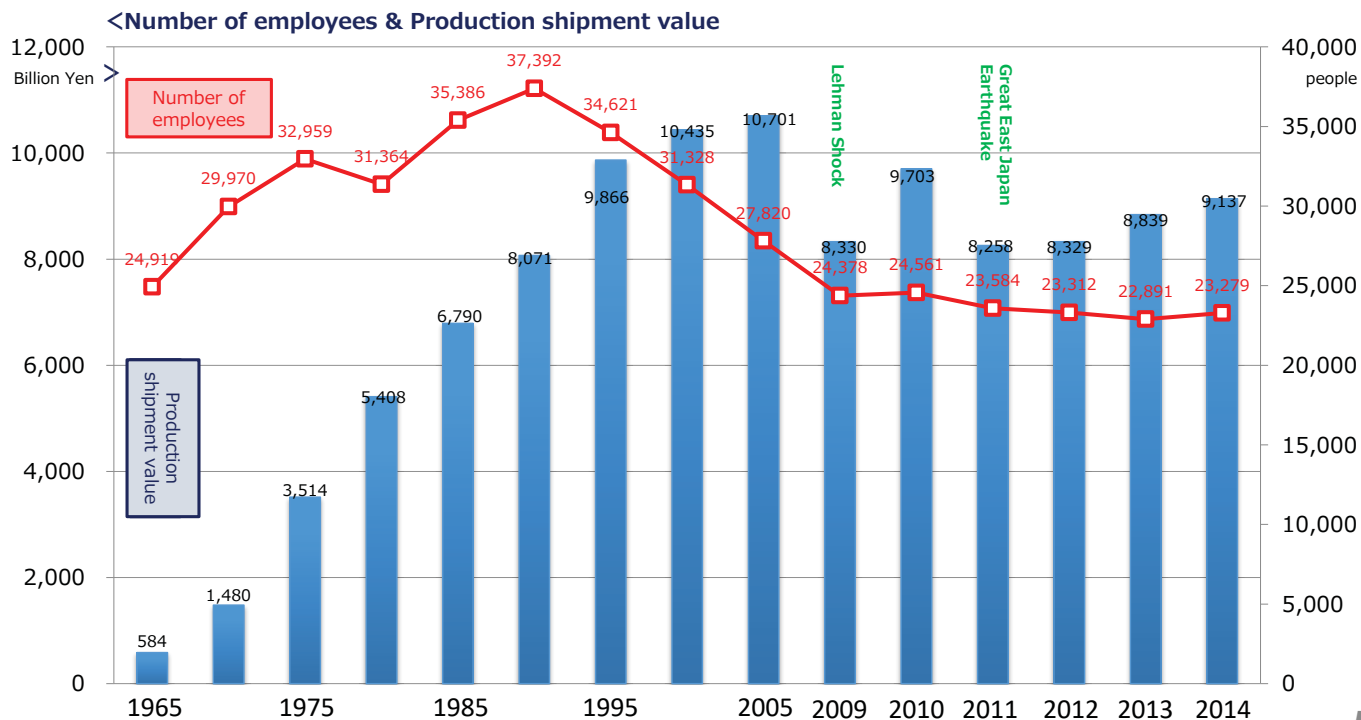
Spa Resort Hawaiians



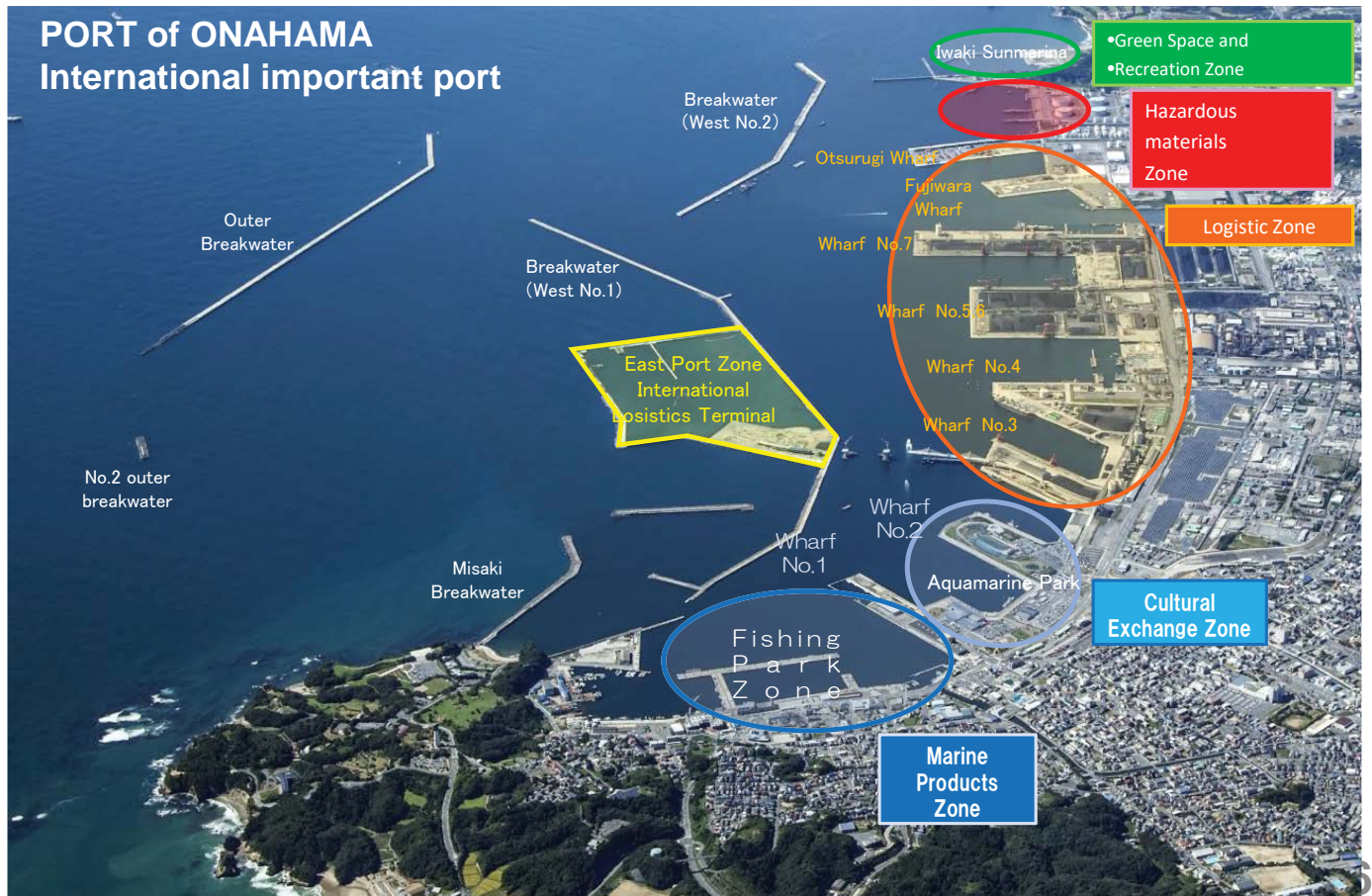
Hula Girl

Industries in Iwaki, Manufacturing facilities

- 15 Industrial parks in the city
- Value of manufactured goods for shipping is 2nd Highest in Tohoku region (refer to graph) ※Graph: Changes in value of shipping goods (in terms of 100 millions of yen)
- Iwaki as an international logistic city with the main Port of Onahama.



Industries in Iwaki, Port of Onahama



Industries in Iwaki, major companies

Major businesses with head offices, main plants in Iwaki

Manufacture of ICT Electronics Equipment	  
Manufacture of Electrical Machinery	 
Manufacture of CHEMICAL	  
Manufacture of Transportation ※Car manufacturer	  
Manufacture of IRON and STEEL, METAL Products	  
Others Apparel, Sports	 

Industries in Iwaki, Excellent SMEs

Excellent SMEs, Entrepreneur in Iwaki



Dr. YOSHINO(Nobel Prize) & Mr.SHOJI
In TOYO SYSTEM 30th Anniversary



SYNTEC

Excellent SMEs Selection 300 2013
From METI,Japan



AIKAWA ENGINEERING

FUKUSHIMA INDUSTRIAL PRILZE 2016



MINORS JAPAN

Excellent SMEs Selection From ICSN



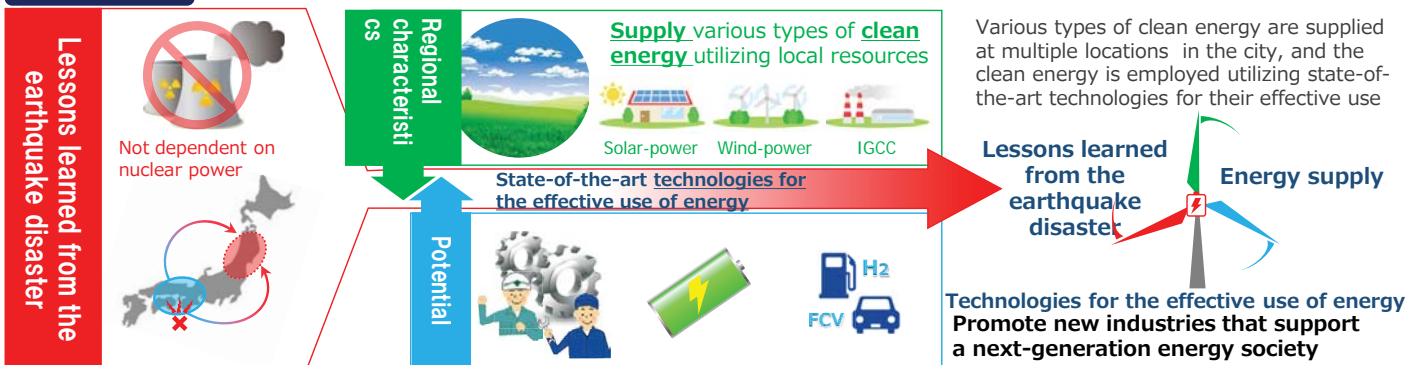
MURAKOSHI MANUFACTURING

Excellent SMEs Selection 300 2014 From
METI,Japan

Contributing to the Restoration/Recovery of Japan
Following the Great East Japan Earthquake

Creating Sustainable Industries, Learning Lessons from the Earthquake Disaster

Overview



- Promoting wind, photovoltaic, woody biomass and other renewable energy industries
- Accumulating and promoting manufacturers of medical devices, storage batteries, nuclear plant decommissioning, robotics and other industries



Industries in Iwaki, Agriculture

- Produce includes: Japanese staple food rice as well as, tomato, onions, strawberries, soybeans, green beans, cucumber, pears, figs and Iwaki's famous Tokkuri-imo Potato.
- Open field vegetables are often shipped between autumn and winter in particular onions which are known to have been cultivated since the beginning of the Meiji period.
- Since greenhouse cultivation allows for the ideal environment throughout winter greenhouse cultivation of cucumbers and strawberries has flourished since the mid-1960s.
- Iwaki is currently Japan's leading house-cultivated tomato producer due to the surge in hydroponics over the last decade.



10

Industries in Iwaki, Tourism in Iwaki



【 Iwaki Yumoto Hot Springs 】

Known as one of the three oldest hot spring areas in Japan. Globally remarkable thermal water production rate of 5t per hour.



【 National Treasure, Shiramizu Amidado Temple 】

The only architecture in Fukushima prefecture approved as national treasure. Sacred atmosphere with beautiful roofing and garden.



【 Iwaki City Coal and Fossil Museum「Horuru」 】

Exhibition of dinosaur fossils found around Iwaki City and also exhibiting the reproduction of people's lives in the coal mining era.



【 Spa Resort Hawaiians】

Spa Resort Hawaiians is an attractive leisure facility with swimming pools and water slides, hot springs, a golf course, restaurants and hotels. The live hula dance show is especially worth seeing. Everyone from children to adults can enjoy spending the whole day there.



【 Aqua Marine Fukushima 】

“Aqua Marine Fukushima” is an ecological aquarium. It has exhibitions about the ocean in Fukushima, which is the junctionline between two ocean currents. You can learn about and enjoy a lot of the practical exhibitions here.



【 Shioyazaki Lighthouse 】

A beautiful white lighthouse, chosen as one of the 50 lighthouses in Japan.

11

Preliminary Announcement

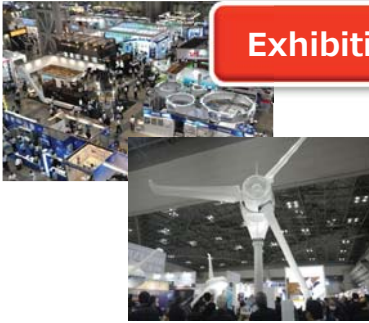
Iwaki Industrial festival Festa 2020

Autumne 2020

Venue : Iwaki Business Innovation Center
Organizers: Iwaki City, ICSN , Iwaki Chamber of commerce, IBV



Exhibition



Business Meetings



Seminars



Attractions



12

THANK YOU FOR YOUR ATTENTION

HULA CITY IWAKI



13