



Aizu Computer Science Laboratories, Inc.

Hall 3 /
Stand 3-167

Address : 1-77 Higashi-Sakaemachi, Aizuwakamatsu, Fukushima 965-0872, Japan

URL : <http://www.aizucsl.com/>

Contact person : Masayuki Hisada

Email : hisada@aizucsl.com

COMPANY OVERVIEW

Our company was established in Apr. 2019, specialized for research and development in advanced computer science fields. The R&D fields cover Artificial Intelligence and Blockchain for energy management system, energy P2P trading system, energy traceability system, etc. Our top-level researcher are invited from all over the world and 2/3 of our researchers are international members. Our company has strong relationship with the University of Aizu. The university was established in 1993, as the first university in Japan solely dedicated to computer science and engineering.

WHAT WE ARE LOOKING FOR

- Partner for our research and development
- Investors interested in tech company specialized for AI and Blockchain technologies
- Energy related service provider interested in using AI and Blockchain technologies
- Any other companies want to collaborate with us

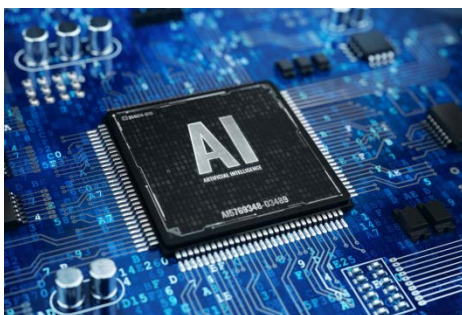
WHAT WE OFFER

- Research and development in advanced computer science field
- AI chip for IoT devices (edge computing)
- Cloud-based AI services (training and prediction)

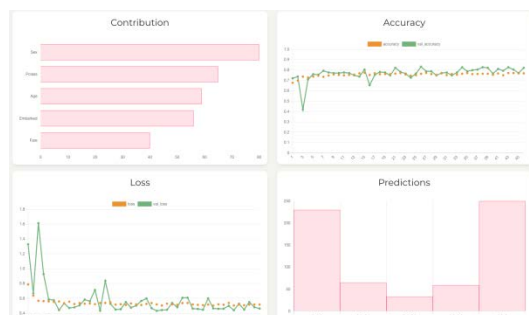
KEY WORDS

- Artificial Intelligence (AI)
- Blockchain technology

OUR PRODUCT & SERVICE



AI for Edge Devices



Cloud-based AI